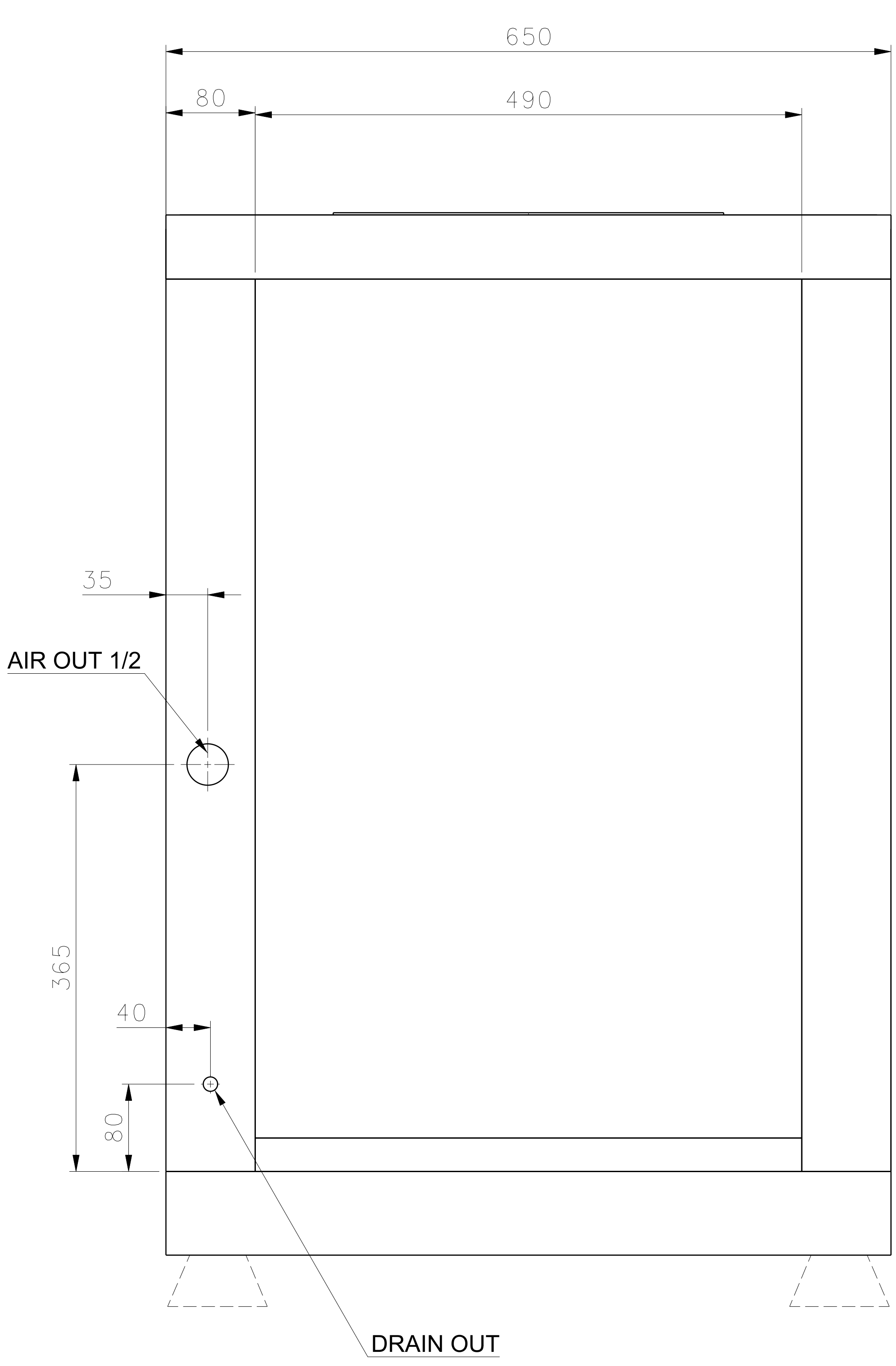
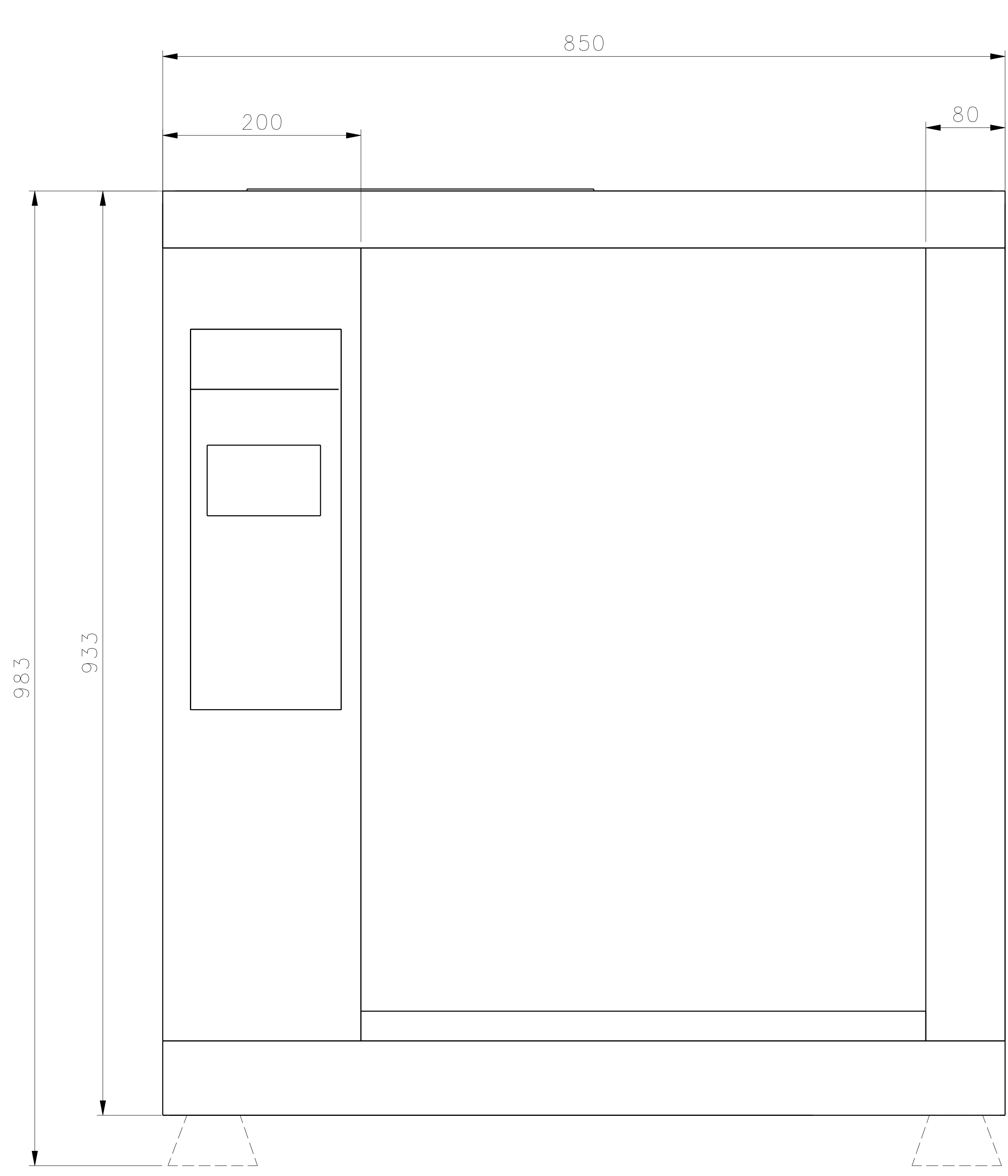


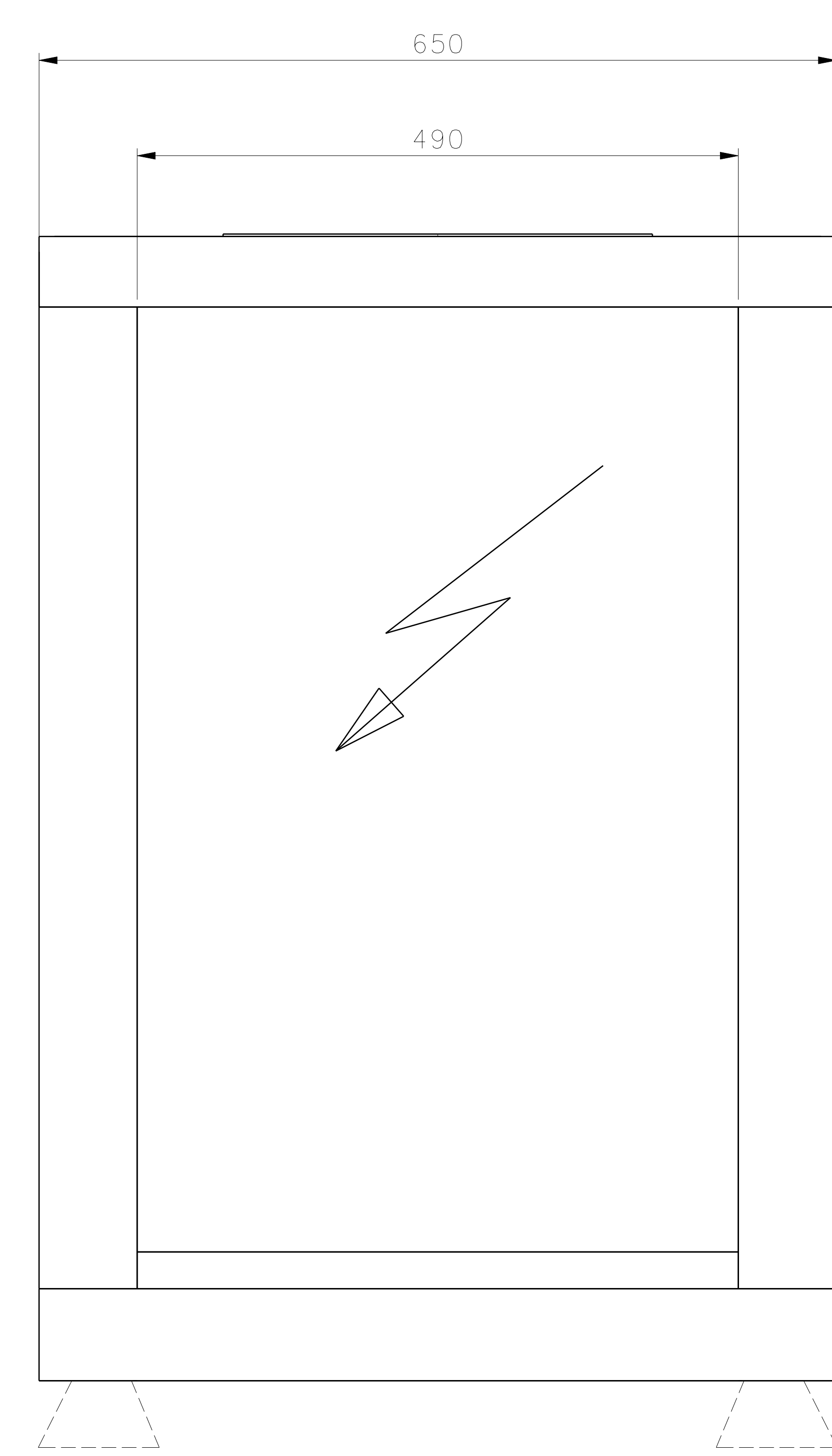
REV	DATE	DESCRIPTION	DWG	APPR
A	02.05.17	SAME CABIN 5,5 -7,5 ACCORDING A NEW UNIT	VS	RO



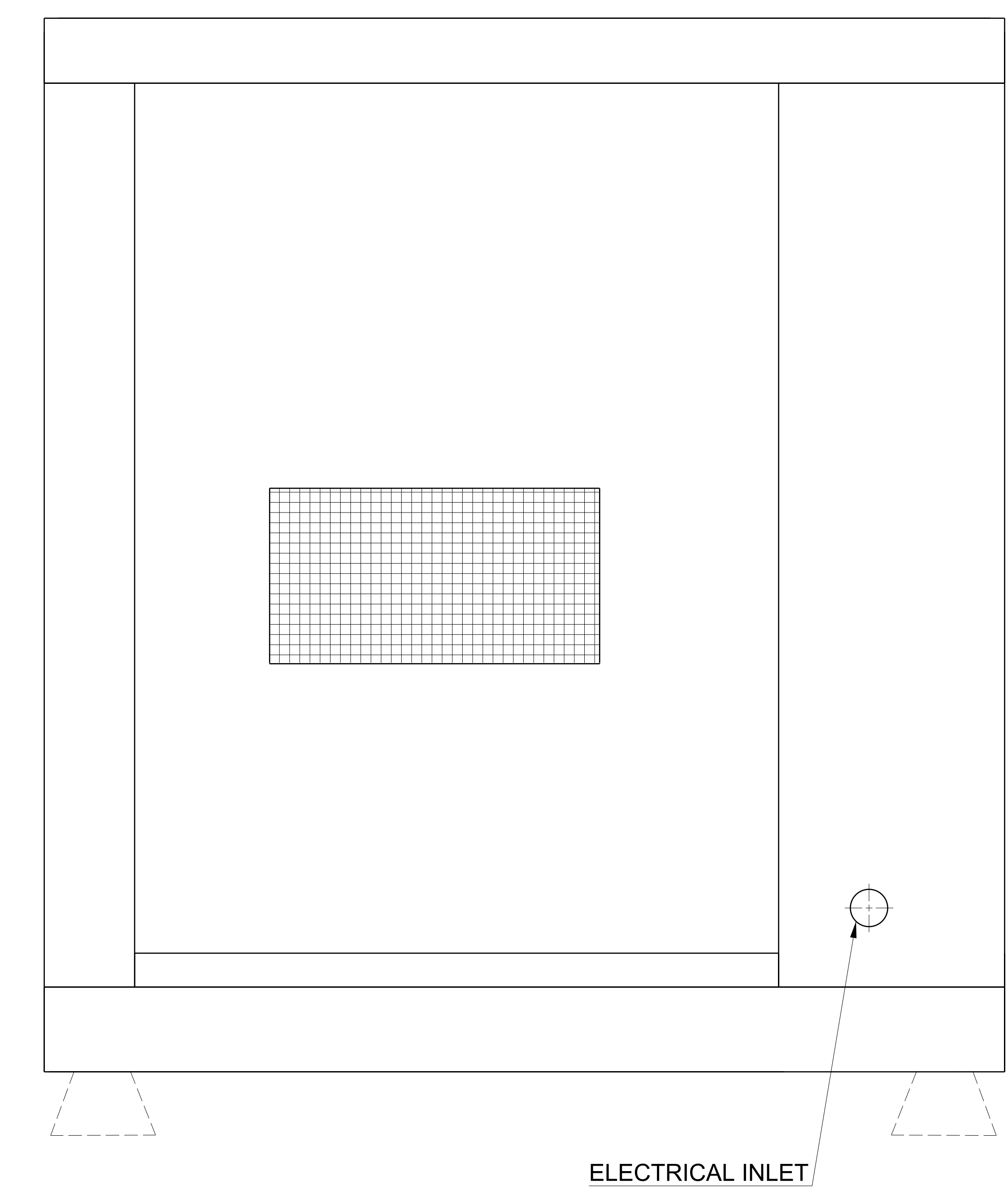
Right view
Scale: 1:3



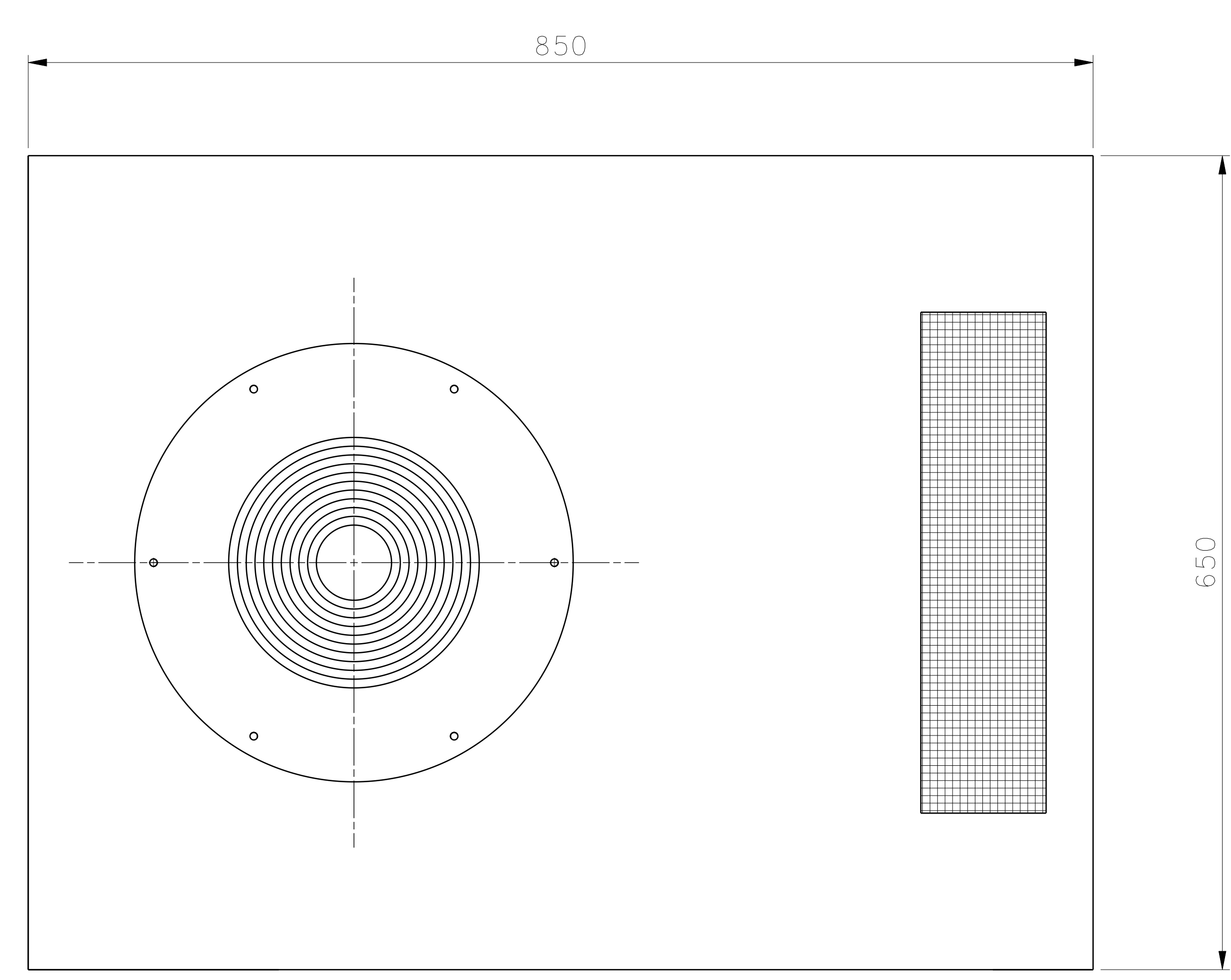
Front view
Scale: 1:3



Left view
Scale: 1:3



Rear view
Scale: 1:3



Top view
Scale: 1:3

25.05.2021

ITEM NO.	QTY REQD	CODE IDENT	PART OR IDENTIFYING NO	NOMENCLATURE OR DESCRIPTION	MATERIAL	SPECIFICATION	ZONE
LIST OF MATERIALS OR PARTS LIST							
THIS DRAWING IS THE PROPERTY OF ANKARA HAMAK IND. AND IS TRANSMITTED IN CONFIDENCE. NEITHER RECEIPT NOR POSSESSION CONFERS OR TRANSFERS ANY RIGHTS TO REPRODUCE, USE OR DISCLOSE, IN WHOLE OR PART, DATA CONTAINED HEREIN FOR ANY PURPOSE, WITHOUT THE WRITTEN PERMISSION OF ANKARA HAMAK IND.							
UNLESS OTHERWISE SPECIFIED DIMENSIONS ARE IN INCHES TOLERANCES ON				CONTRACT NUMBER			
FRACTIONS		DECIMALS		DATE OF DRAWING			
±	—	±	.5	11 JAN 2009			
DRAFTSMAN		CHECKER		ENGINEER			
V. SAKAL		I. KARAHAN		FUNCTIONAL DESIGN			
ENGINEER		I. URKUT		CODE IDENT NO.			
MANUFACTURING		WELDING		SIZE			
A0		DRAWING NO.		WK-0055-9200			
NEXT ASSY		USED ON		APPROVED			
APPLICATION				R. OKÇUN			
SCALE		UNIT WT		LB		SHEET OF	



SCROLL COMPRESSOR
DIMENSIONS 3,7- 5,5 -7,5 KW